



**Trellis Square, London, , E3 2DR**  
**£2,500 Per Month**

Elms Estates offer to the market To Let this three bedroom split-level apartment situated on the 2nd & 3rd (top) Floors. The property borders the Tredegar Square Conservation Area and is within a Short Walk of either Bow Road or Mile End Road Tube Stations offering multiple Tube Lines. The property is also within walking distance of Queen Mary & Westfield University.

Trellis Square is available furnished and ready for occupation Immediately





**Reception Room**  
16'4" x 9'2" (5.0 x 2.80)

**Kitchen**  
10'2" x 10'5" (3.10 x 3.20)

**Bathroom**

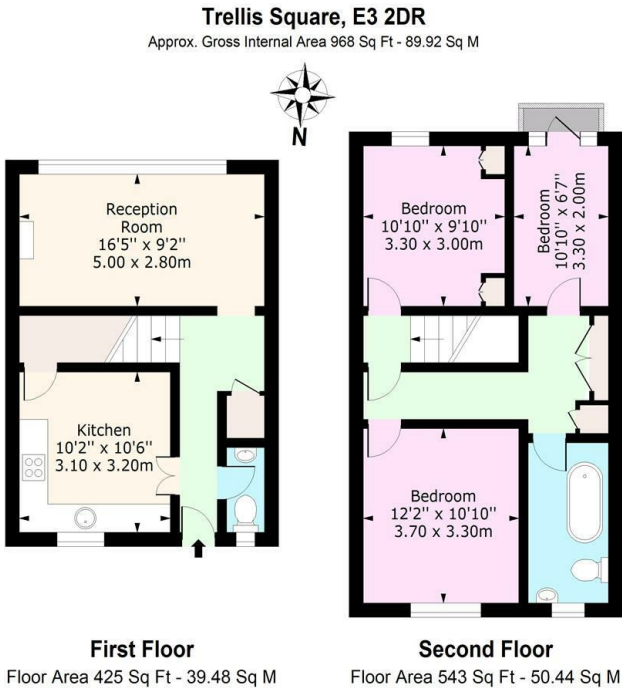
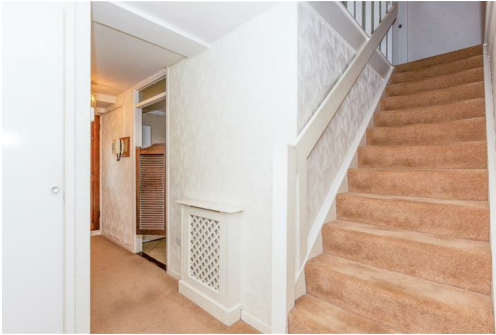
**Bedroom 1**  
12'1" x 10'9" (3.70 x 3.30)

**Bedroom 2**  
10'9" x 9'10" (3.30 x 3.0)

**Bedroom 3**  
10'9" x 6'6" (3.30 x 2.0)

**W/C**

**Material Information**  
Deposit: £2,884.61  
Length Of Tenancy: One Year  
Council Tax Band: C



For Illustration Purposes Only - Not To Scale  
www.lpaplus.com

